

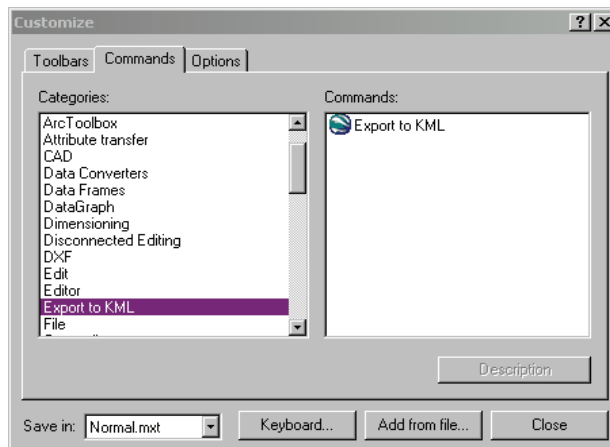
- Do you have a GIS or Technology Related BlogRoll? If you find this tutorial useful, please add a ArcDex blog link!
- Advertise here!
- Do you have a specific GIS project that you could use a custom tutorial designed for you just like this? With prices starting from \$19.95 there is no sense in struggling or taking expensive courses. Contact us at ken@stolasgeospatial.com

Creating Google Earth KMLs from ArcGIS

Requirements: ArcGIS 8/9, Google Earth, Internet Connection

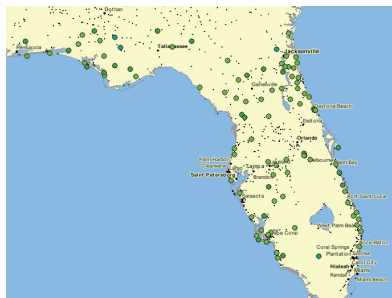
This tutorial is based on the Export to KML 2.2.3 script, written by Kevin Martin and freely available at ESRI.com. Click [here](#) to download.

1. Download and Unzip the Export_to_KML_V2_2_3.zip file
2. Double-click the batch file exporttokml_install.bat
3. Open ArcMap. Select TOOLS / CUSTOMIZE
4. Click on the ADD FROM FILE button
5. Navigate to your unzipped files from above, and select ExporttoKML.dll
6. Select OPEN then OK
7. While still in the TOOLBARS tab, ensure that Export to KML is checked
8. Click on the COMMANDS tab



9. Scroll down to the Export to KML entry. Notice in the window to the right a GE symbol appears with the phrase Export to KML.

10. Left click and drag the globe image into your toolbar to dock it. The extension is now installed!



11. Open your MXD or other file in ArcMap. For simplicity, we are going to use a dataset showing recent tornadoes in the state of Florida.

12. Click on the GE Symbol that that we docked in step 10.



ArcDex GIS2.0 blog
arcdex.blogspot.com

A publication of
StolasGeospatial.com

- Do you have a GIS or Technology Related BlogRoll? If you find this tutorial useful, please add a ArcDex blog link!
- Advertise here!
- Do you have a specific GIS project that you could use a custom tutorial designed for you just like this? With prices starting from \$19.95 there is no sense in struggling or taking expensive courses. Contact us at ken@stolasgeospatial.com

Creating Google Earth KMLs from ArcGIS

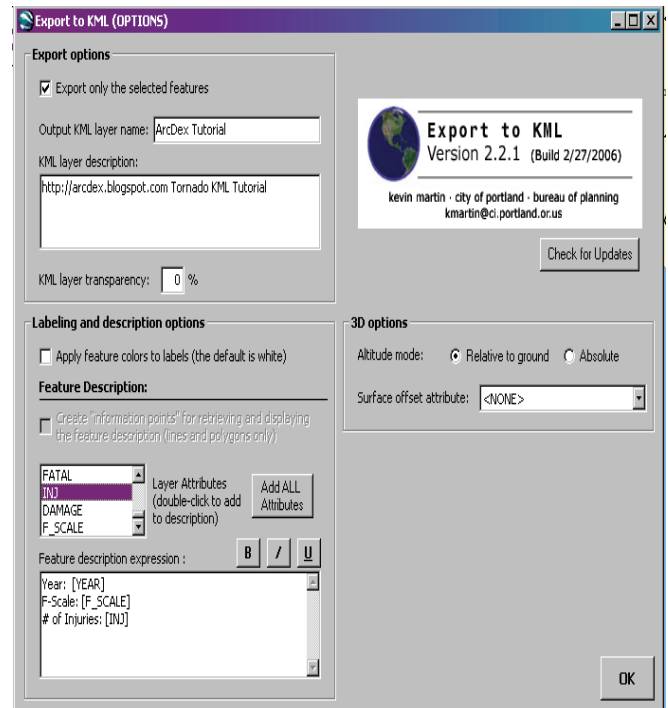
Requirements: ArcGIS 8/9, Google Earth, Internet Connection

- This brings up the KML interface window
- In Select Layer to Export, we are choosing our Tornado point layer
- If you have established symbology in ArcMap, you can leave the Group and Color Features...box checked.
- When displayed in Google Earth, each point will have a label that shows without clicking the feature. Choose the label you would like by changing the drop down box in the optional Select and Attribute for Labeling Features Box. We are using the F Scale, a scale that measures the destructiveness of a tornado
- If you have an altitude field in your ArcMap table, select it from the next box that represents height. Normally you won't.
- Click OPTIONS
- Uncheck Export Only the Selected Features (unless you only want to map selected features)
- Name your KML layer
- Give it a description (html is allowed)
- The Feature Description box allows you to edit the GE info window that pops up when the user clicks it. HTML is allowed here. We are going to add the Year, F Scale and Number of Injuries to our windows. Your ArcMap attribute field names will be in [brackets]. Put in regular text to label the attributes. The code looks like this:

Year: [Year]

F-Scale: [F_SCALE]

of Injuries: [INJ]



ArcDex GIS2.0 blog
arcdex.blogspot.com

A publication of
StolasGeospatial.com

Creating Google Earth KMLs from ArcGIS

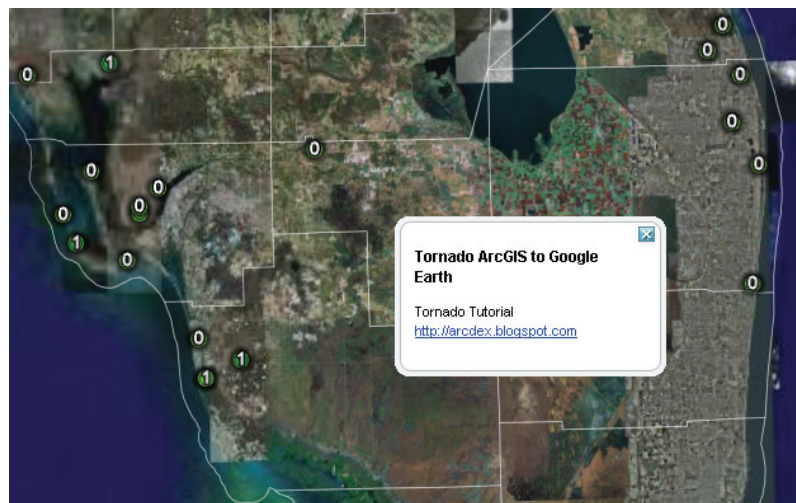
Requirements: ArcGIS 8/9, Google Earth, Internet Connection

- Do you have a GIS or Technology Related BlogRoll? If you find this tutorial useful, please add a ArcDex blog link!
- Advertise here!
- Do you have a specific GIS project that you could use a custom tutorial designed for you just like this? With prices starting from \$19.95 there is no sense in struggling or taking expensive courses. Contact us at ken@stolasgeospatial.com

23. Click OK

24. Click OK to begin the export. If you have a large file this may take a few moments. A file progress bar will show on the bottom left corner of ArcMap

25. After the file completes it's processing, it will ask you if you want to open in Google Earth. At this point you have a fully functioning KML file ready for distribution!



26. But you could dress this up a little more by manually tweaking the KML file. Lets look at the partial KML file in Notepad or Wordpad:

```
<?xml version="1.0" encoding="UTF-8"?>
<kml xmlns="http://earth.google.com/kml/2.0">
<Document>
  <name>Tornado ArcGIS to Google Earth</name>
  <open>1</open>
  <description>Tornado Tutorial<br />http://arcdex.blogspot.com</description>
  <Style id="0">
    <IconStyle>
      <color>FF00C46F</color>
      <Icon>
        <href>root://icons/palette-4.png</href>
        <x>32</x>
        <y>128</y>
        <w>32</w>
        <h>32</h>
      </Icon>
    </IconStyle>
    <LabelStyle>
```



Creating Google Earth KMLs from ArcGIS

Requirements: ArcGIS 8/9, Google Earth, Internet Connection

- Do you have a GIS or Technology Related BlogRoll? If you find this tutorial useful, please add a ArcDex blog link!
- Advertise here!
- Do you have a specific GIS project that you could use a custom tutorial designed for you just like this? With prices starting from \$19.95 there is no sense in struggling or taking expensive courses. Contact us at ken@stolasgeospatial.com

27. Instead of using the green dots, lets use a custom tornado icon. Looking at the KML code again, we see that the dots are coming from: root://icons/palette-4.png

```
<Style id="0">
  <IconStyle>
    <color>FF00C46F</color>
    <Icon>
      <href>root://icons/palette-4.png</href>
```

28. In order to change the image, we just need to redirect the URL: root://icons/palette-4.png. For example, we are going to use the icon to the right to represent our tornados. First upload the icon to your webserver, in a public directory. We are putting ours at www.stolasgeospatial.com/tornadoicon.gif. Now, put in that URL in between the <href> tags. Change the color to white, which is 'FFFFFFF.' The KML now will look like this:



```
<Style id="0">
  <IconStyle>
    <color>FFFFFFF</color>
    <Icon>
      <href>www.stolasgeospatial.com/tornadoicon.gif</href>
```

29. Do this for each style id that you wish to change. The style ID is directly related to your symbology. In this case, Style ID = 0 is our F-Scale of 0. In this example we'll only change F-Scale of 0, and leave the rest so you can see the difference in GE.

30. Our icons are also larger then the standard points. So we need to change the width and height that the KML assigns to the icon. If not, the icon will be cut off. Here is the orginal KML:

```
<x>32</x>
<y>128</y>
<w>32</w>
<h>32</h>
```

31. Change W and H to 50, respectively . That will allow for the entire custom icon to fit.

32. Save the KML. Open it back up in Google Earth and viola! You have your own data in GE!

33. Click [here](#) to open our KML file in Google Earth.

34. Good Luck.